



Learning & Development

Mercury: game-changing features ahead

Chin Hui Yeo

Chief Technology Officer



Mercury Nexus

The game-changing features ahead

Chin Hui Yeo

Chief Technology Officer



We've been busy...

Understanding the
business



Stabilising the platform



Connecting with you



Increasing team size
and investment



Collecting feedback
from you



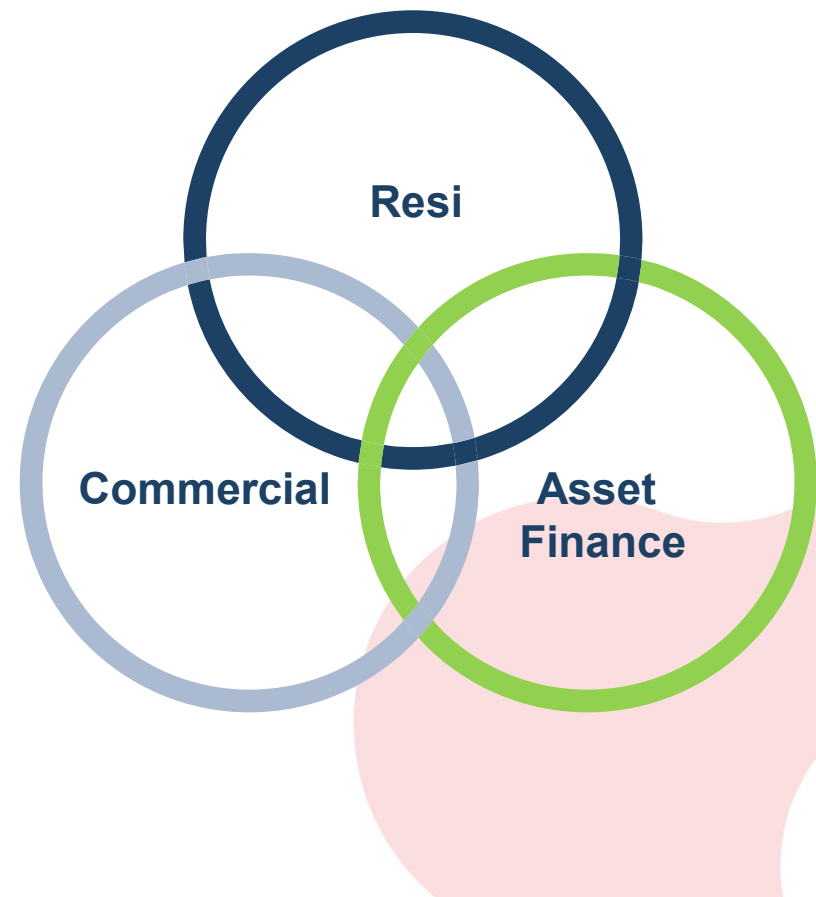
Imagining, innovating
and building



Mercury Nexus is evolving

You and your clients are at the heart of everything we do...

- Fit-for-purpose for Resi, Asset and Commercial
- Smoother process
- Reduced duplication of effort
- Improved experience





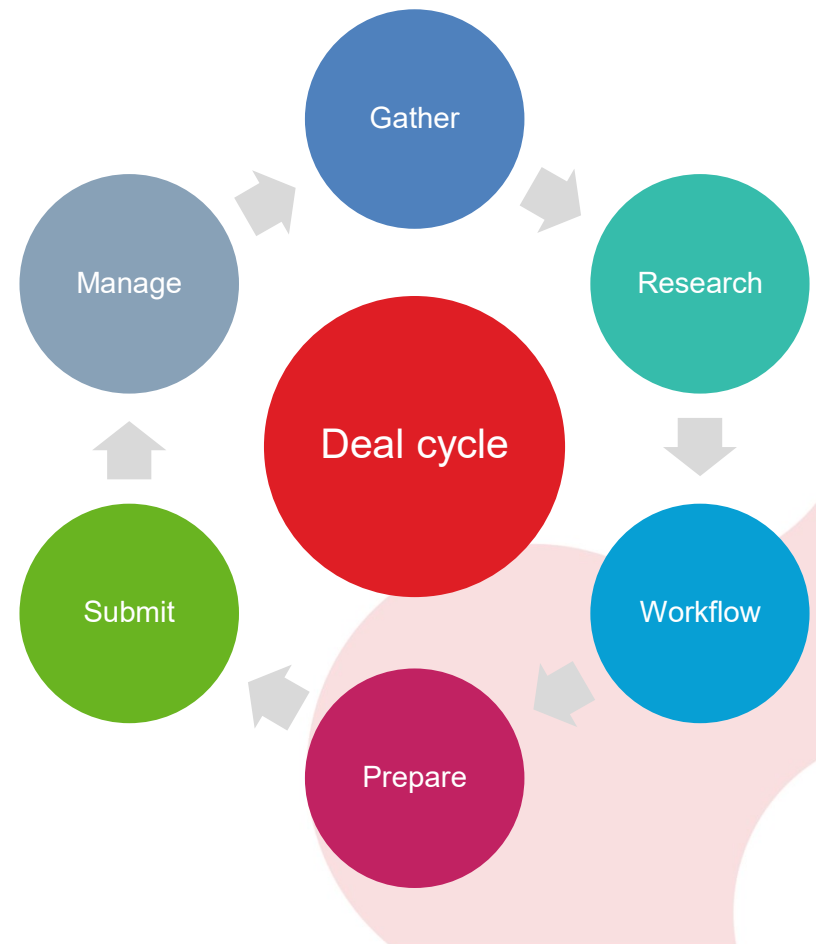
Our Focus

Supporting you to
manage your business
and enhance your
clients' experience.

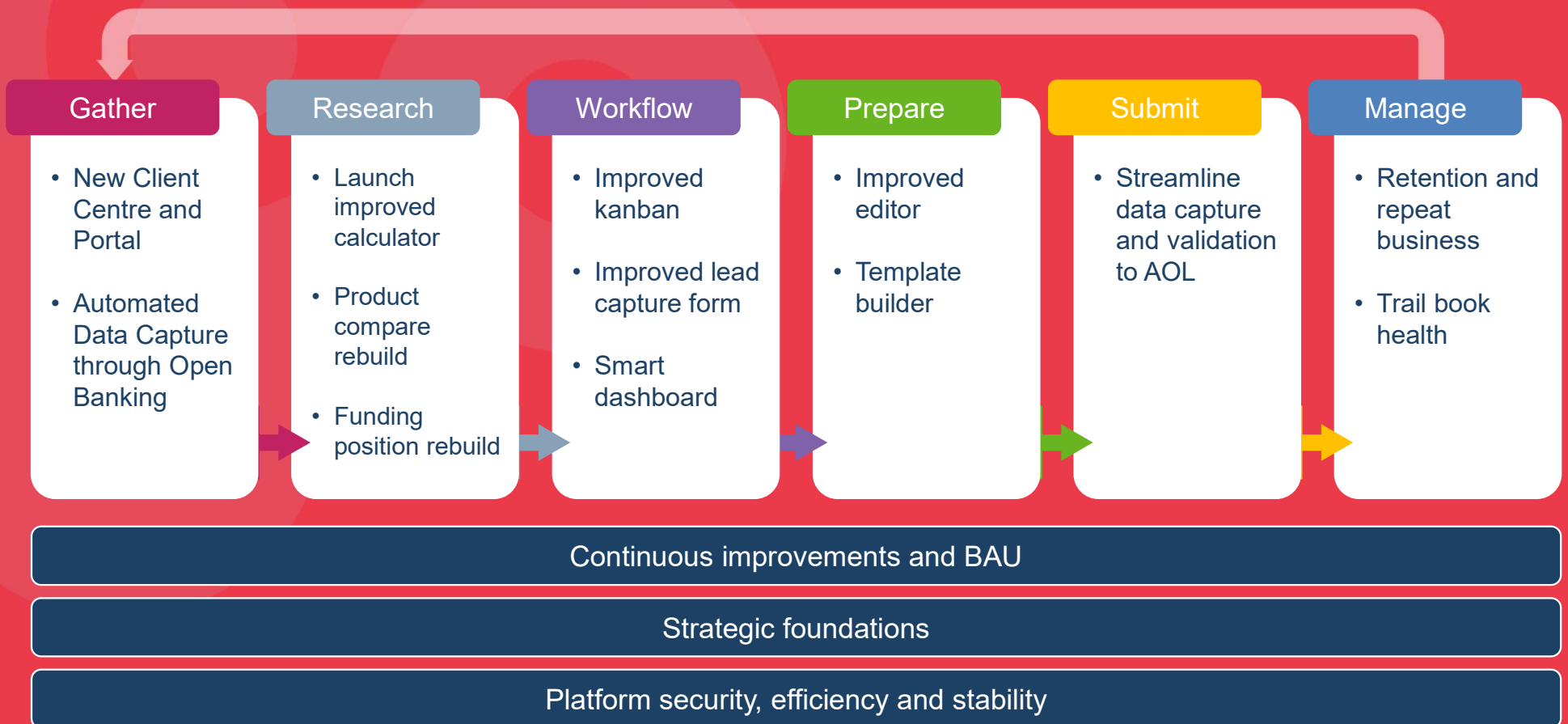
The roadmap journey

Our 2025 roadmap is based on your deal cycle:

- Ideas submitted to Ideas Portal
- Feedback via Helpdesk
- Interaction with various broker groups
- Identify improvements



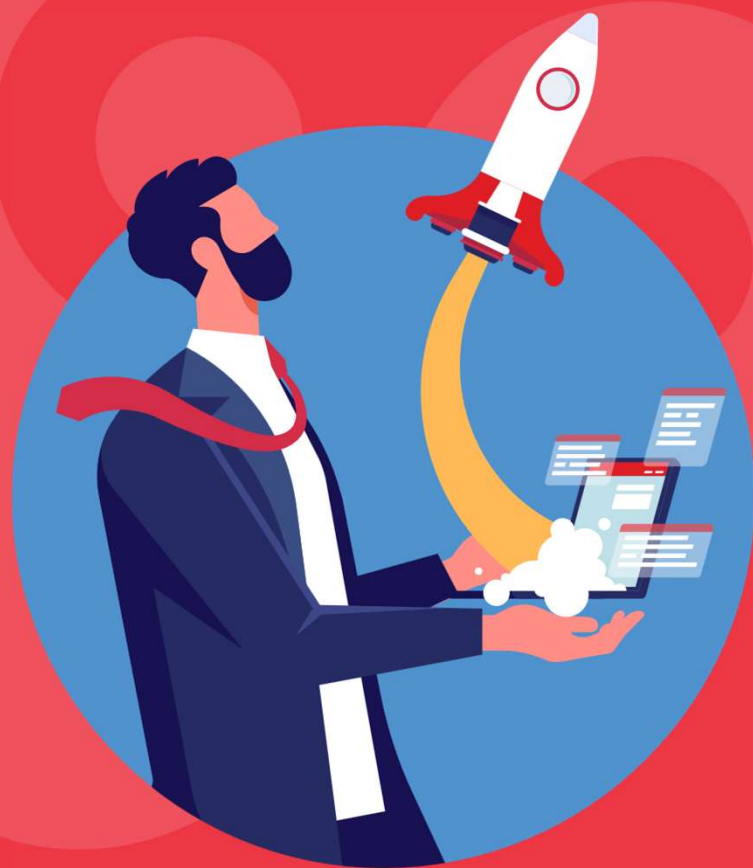
The 2025 Roadmap





The game-changing features





A new **Borrowing
Capacity Calculator**
is coming with
accuracy like never
before.



Why it's a game changer

Michael's BCC

Calculate

To calculate borrowing capacity, please provide details on loan applicants, proposed loan, and at least one income source. For the best accuracy, we recommend completing all sections.

Loan applicants

Specify all the loan applicants with their details

1 Applicant

Proposed loan

Provide details for your proposed loan and link associated securities.

1 Loan

Main income & earnings

Specify your main income or any other additional incomes

2 Applicants, 3 Income

Living expenses

Specify your household, personal or any other additional expenses

1 Applicants, 4 living expenses

Financial liabilities

Specify both personal and business-related financial commitments.

1 Liability

Properties & mortgages

Add properties and manage any associated mortgages in one place.

1 Property

Self-employed business

Specify your business income and expenses.

1 Business

Results are estimates and should be used as a guide only. For full details and assumptions, see our disclaimer. [Learn more](#)

Lender results

More Actions

Lender	Status	Max Capacity	Rate	Mth Repay
ANZ	Passed	\$ 5,590,000	5.5 %	\$ 3,380
COMMBANK	Passed	\$ 5,450,000	5.8 %	\$ 3,531
MACQUARIE	Failed	\$ 6,053,365	6.3 %	\$ 3,500
Westpac	Failed	\$ 6,000,000	6.45 %	\$ 4,300
NAB	Verify	\$ 5,500,000	7.5 %	\$ 5,480
AMP	Verify	\$ 5,000,000	5.8 %	\$ 6,000
BLUESTONE	Passed	\$ 4,650,000	7.3 %	\$ 4,300
ATHENA	Passed	\$ 6,053,365	6.98 %	\$ 3,800
BANKWEST	Passed	\$ 6,053,365	5.4 %	\$ 3,320
BENDIGO BANK	Passed	\$ 6,053,365	6.23 %	\$ 3,320
SUNCORP	Passed	\$ 6,053,365	5.5 %	\$ 3,320
ATHENA	Passed	\$ 6,053,365	5.5 %	\$ 3,320
COMMBANK	Passed	\$ 6,053,365	5.5 %	\$ 3,320

- Faster workflow
- More flexibility
- Intuitive layout
- Accuracy like never before

More features coming...



All Systems Operational

Uptime over the past 90 days. [View historical uptime.](#)



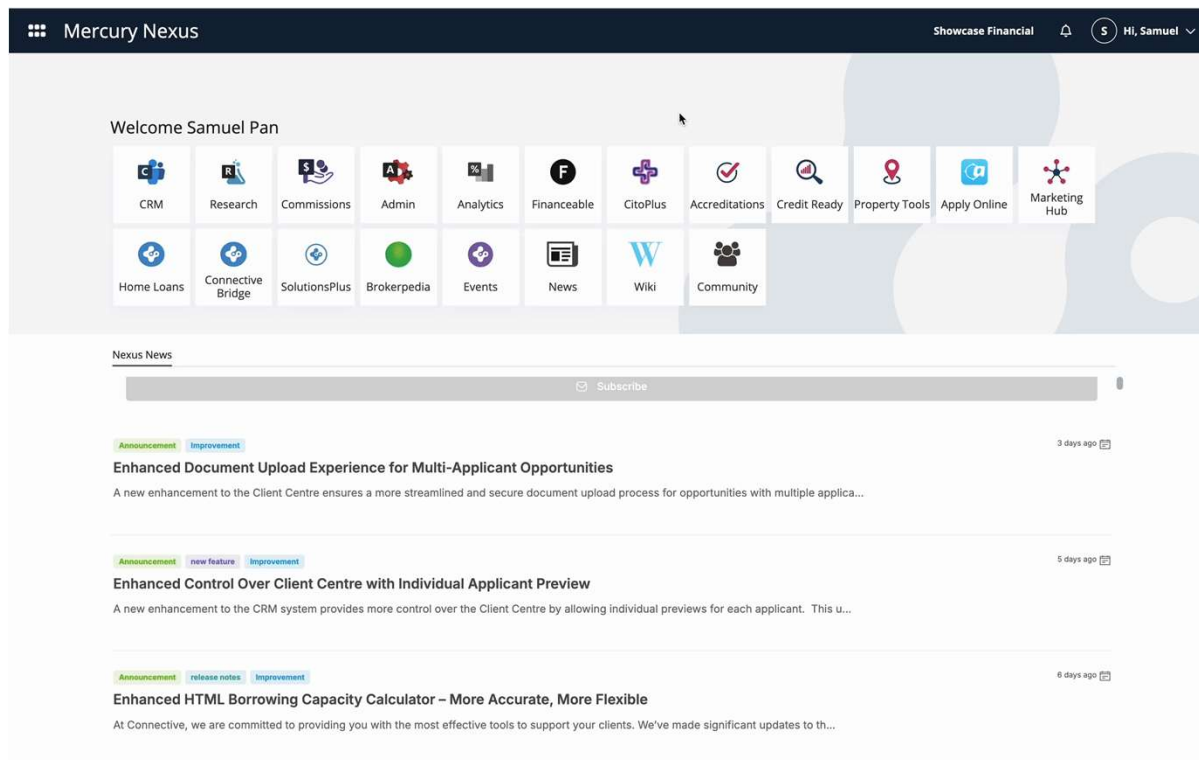
Service status page

➤ Transparency on our services

➤ Overall up-time

Help shape Mercury Nexus

Submit your ideas via the Ideas Portal



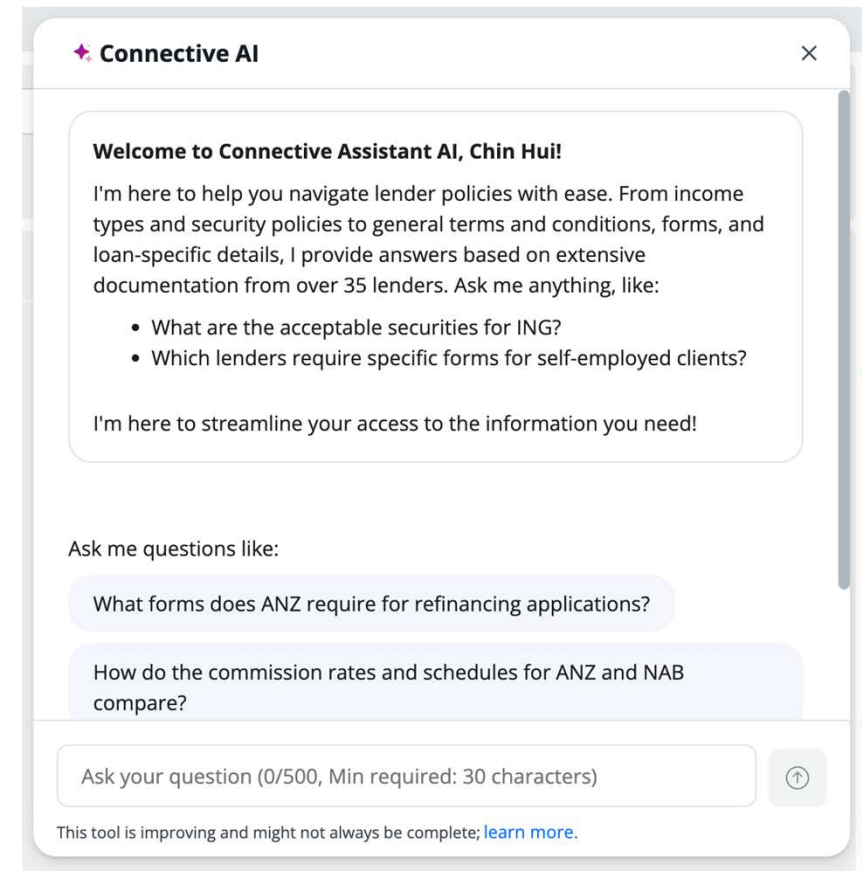
Why and what's changed?

- Renewed focus
- Updates on your idea
- Shortlist to be published

Click. Ask. Done

Master complex lender policies in seconds with **Connective AI** – coming soon!

- Make faster, informed decisions
- Spend less time searching and more time settling loans
- Simple to use





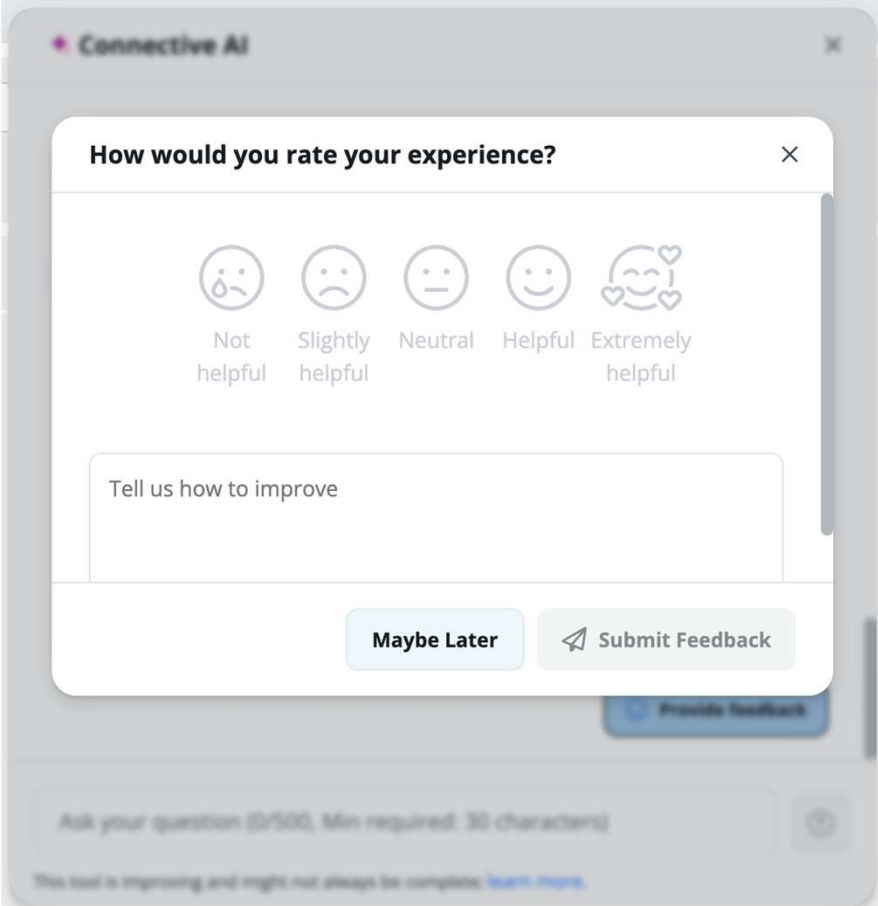
Register for early
Connective AI
access at the
Mercury stand

Your feedback shapes our innovation

The more you share the more powerful it will become

Your feedback can help:

- Provide greater accuracy
- The AI engine understand complex questions

A screenshot of a feedback modal from 'Connective AI'. The modal has a title 'How would you rate your experience?' and a close button. It features five rating options with corresponding icons: 'Not helpful' (sad face), 'Slightly helpful' (neutral face), 'Neutral' (neutral face), 'Helpful' (happy face), and 'Extremely helpful' (happy face with heart). Below the ratings is a text input field labeled 'Tell us how to improve'. At the bottom are two buttons: 'Maybe Later' and 'Submit Feedback'. The background shows a blurred chat interface with a 'Provide Feedback' button and a question input field.

Connective AI

How would you rate your experience?

Not helpful Slightly helpful Neutral Helpful Extremely helpful

Tell us how to improve

Maybe Later Submit Feedback

Provide Feedback

Ask your question (0/500, Min required: 30 characters)

This tool is improving and might not always be complete. [Learn more.](#)

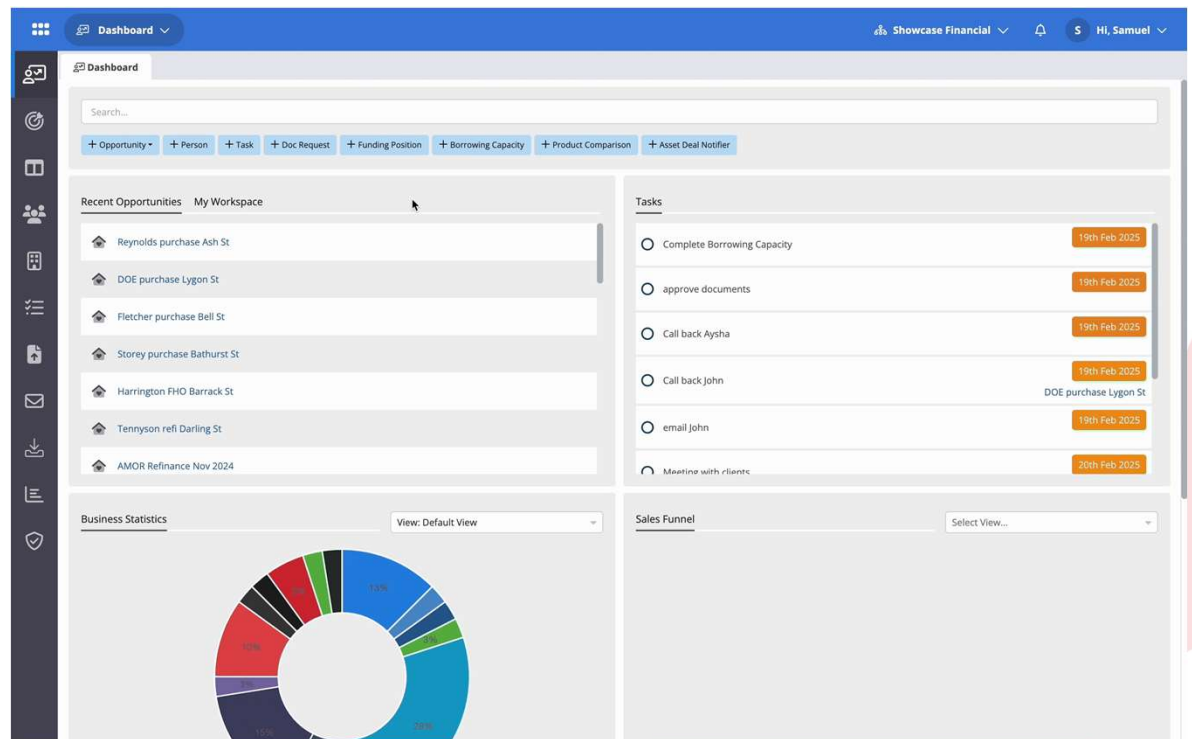
Say hello to open banking

Financial Passport uses open banking to get an up-to-date financial position for your clients, faster!

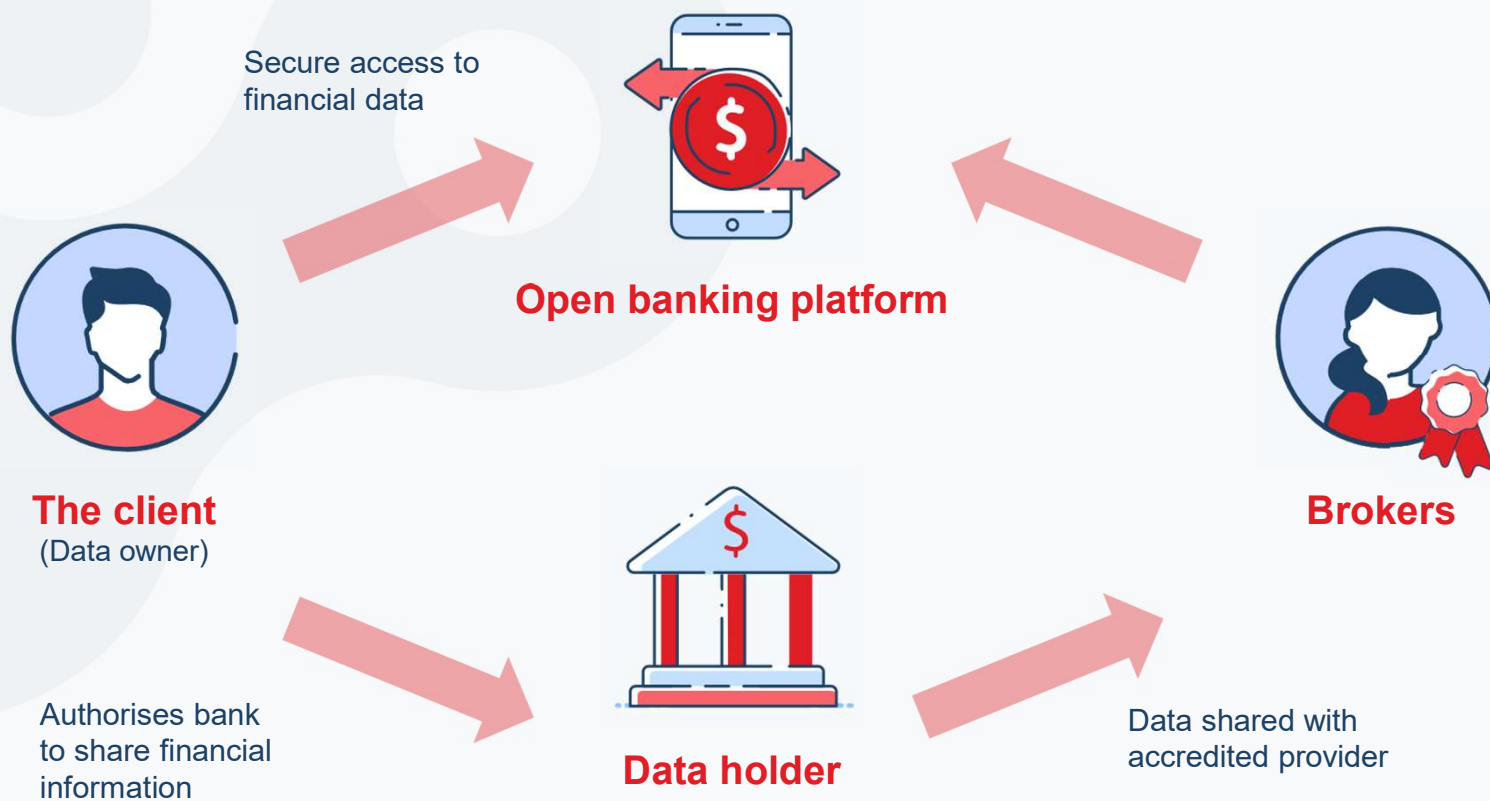
➤ Accurate

➤ Simple

➤ Efficient



Financial Passport – How it works



Visit us at the expo stand

Chat to me and ask
Connective AI your burning
questions.

